



GLOBAL CAMPUS CHIANGMAI IN YEAR 2022



- SEMINAR WITH ALL MEMBER FOR PLANING PROGRAM FOR GC 20 YEAR ANIVESARY.
- ACTIVITIES OF PROMOT DISABILITY CULTURE RUNNING ONLINE SHOW ONE TIME A MONTH.
- TEACHING DISABILITY CULTURE TO NEW MEMBER.
- SUPPORTING WOMEN WITH DISABILITY PROGRAM IN GC- CHOMTHONG / HOME VISIT PROGRAM/CONDUCT SEMINAR/DIAPER PROGRAM
- SUPPORTING GCC MEMBER WITH CARTOON PROGRAM TO EDUCATE BY PUBLISH ONLINE THROUGH PAGE " DIFFERENCE TOGETHER"
- JOINING IN EQUITY LEADERSHIP PROGRAM WITH THAIHEALTH PROMOTION FOUNDATION/ REPRESENTATIVE ON BEHALF ONLY ONE WOMEN WITH DISABILITY IN 2 YEARS PROGRAM
- EXPANDING NEW SATELLITE GC- PROGRAM WITH WOMEN WITH DISABILITY PHAYAO PROVINCE.



GLOBAL CAMPUS CHIANGMAI IN YEAR 2022



- SUPPORTING GCC MEMBERS WHO WORK WITH FRIENDLY DESING PROGRAM BY GIVING SUGGESTION, COLLABORATE, CONNECTING, PLANING.
- SUPPORTING NORTHERN REGION OF FRIENDLY DESING GC SATELLITE SINGHT SEEING PROGRAM.
- ATTEND INTERNATIONAL CONFERENCE " ACCESSIBLE IN THE FUTURE AND TOURIM FOR ALL" IN ISRAEL COUNTRY AS A GUEST OF ISRAEL CONSULATE THAILAND. JOING IN PANEL DISCUSSION
- TEACHING DISABILITY CULTURE FOR GROUP OF SUDENT FROM FACULTY OF MASS COMMUNICATION
- SUPPORTING STUDENT PROGRAM OF CHIANGMAI UNIVERSAL DESING BY COUNSALTING, FACILITATOR
- JOING WITH AMERICAN CONSULATE CHIANGMAI IN SEMINAR PROGRAM.



JANUARY



FEBRUARY



MARCH

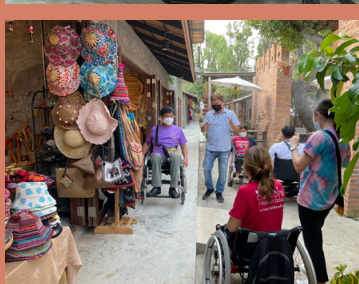
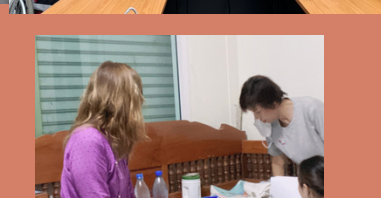
APRIL



MAY



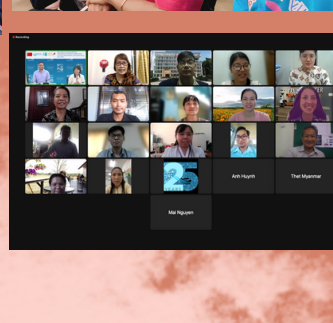
JUNE



JULY



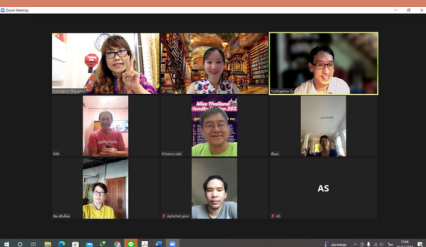
AUGUST



SEPTEMBER



NOVEMBER



DECEMBER

